

Vetus Nova

Veterinary Diagnostic Ultrasound System

Trust in Every Scan



Initial Passion
Best Sincereness



The Orange Label
Initial Passion & Best Sincereness



LinkedIn Facebook Instagram

Search Mindray Animal Medical

www.mindrayanimal.com
service@mindrayanimal.com

P/N:ENG-Vetus Nova-ORA-210285X8P-20240830

©2024 Shenzhen Mindray Animal Medical Technology Co., LTD. All rights reserved.

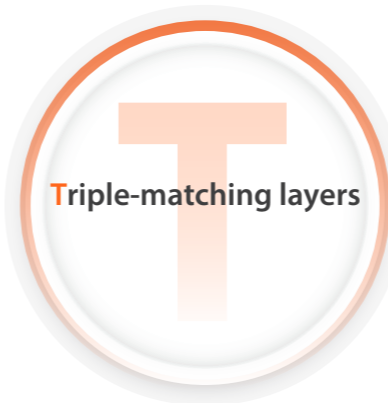


Advanced Technology for Superior Image Quality

Vetus Nova delivers clear animal ultrasound images through its innovative transducers and advanced image processing technology.

3T Transducer Technology

The entire series of Vetus Nova probes adopts 3T transducer technology. Triple-matching layer technology, total-cut design, and temperature control technology provide a purer signal, restore true images, and ensure less signal loss, with clearer details.






Vetus Nova

Mindray Animal Medical is committed to popularizing advanced technology and providing the same life-care for more animals. Through continuous innovation, we bring cutting-edge ultrasound technology and intelligent analysis functions to the animal healthcare industry.

Vetus Nova adopts a brand-new appearance design, applying advanced imaging technology and intelligent functions, making it more practical, user-friendly, and durable. It helps veterinarians solve more clinical pain points and provide better clinical services.

Professional Veterinary Presets

-  4 Application Directions & 7 Animal Types
-  One-Click Selection of Imaging Presets & Quick Switching
-  Enable Customized Diagnostic Presets

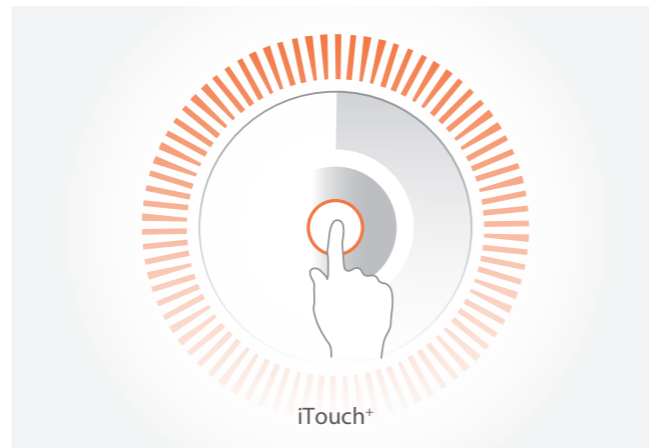


Intelligent Tools for Faster Diagnosis

Vetus Nova provides a series of intelligent tools closely aligned with clinical applications, maximizing diagnostic efficiency and accuracy.

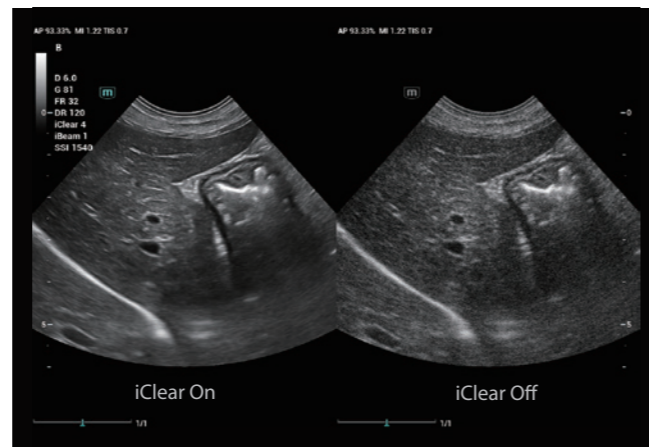
iTouch+

iTouch+ allows for automatically optimizing image parameters with one click to quickly obtain better image quality.



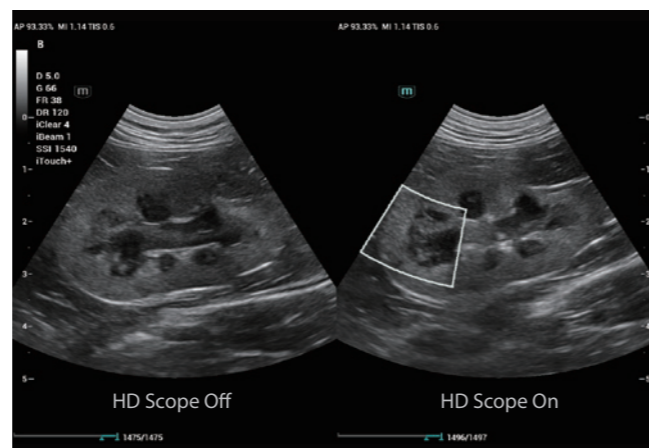
iClear

This intelligent image optimization technology effectively suppresses speckle noise in 2D images, enhancing the image contrast resolution and making tissue boundaries clearer and echoes more delicate.



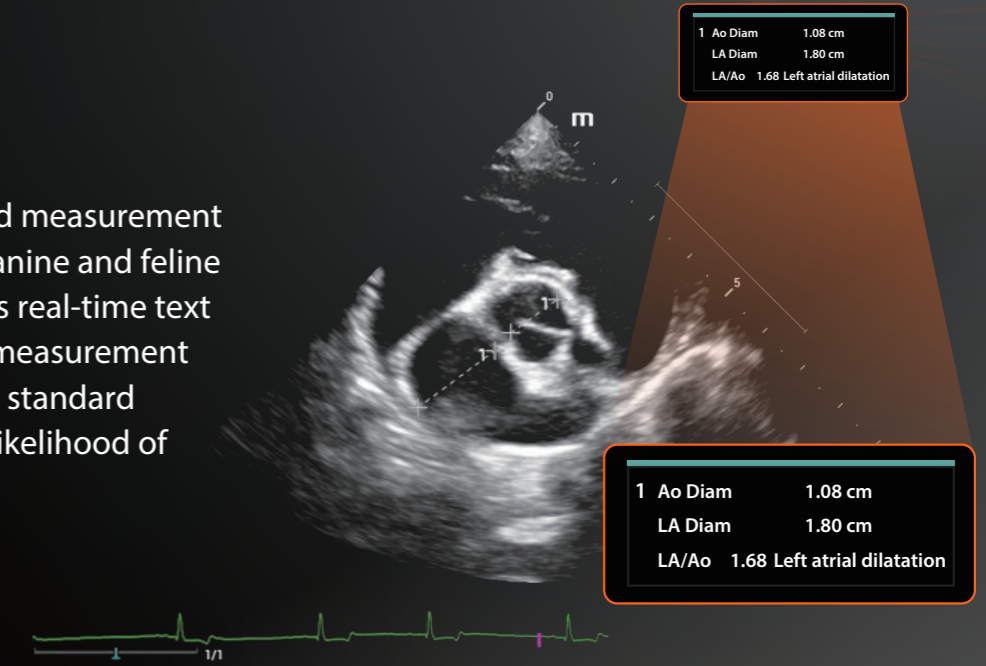
HD Scope

HD Scope can retrieve and analyze the original data in real time. It uses different processing parameters according to the acoustic characteristics of different tissue types to improve the detail information and image contrast within the region.



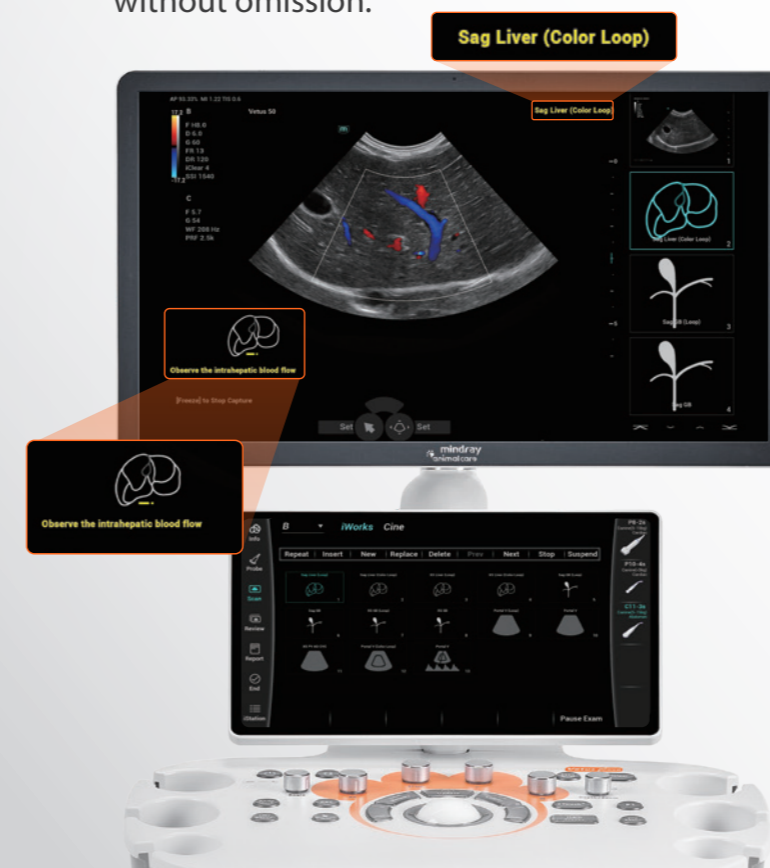
iMeasure

It has built-in standard measurement values for common canine and feline patients, and provides real-time text reminders when the measurement results exceed the set standard values, reducing the likelihood of missed diagnoses.



iWorks

The protocol covers applications in the heart, abdomen, reproductive system, and more, ensuring veterinarians complete a standardized scan of the anatomical structures without omission.



- 1 Performing Section Scanning
- 2 Automatically Switching Image Modes
- 3 Automatically Adding Annotations and Markers
- 4 Automatically Activating Measurement
- 5 Automatically Switching to the Next Section
- 6 Completing the Entire Scan

Ergonomic Design: Practical and Elegant



21.5" High-Definition Display
Anti-Glare with Wide Viewing Angle



Large Storage Space
More Organized Accessory Storage



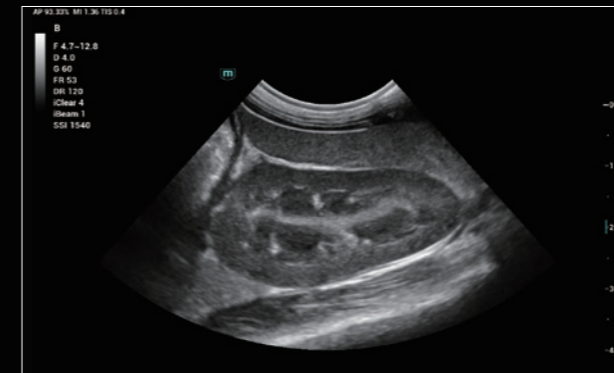
Large Storage Space
More Organized Accessory Storage



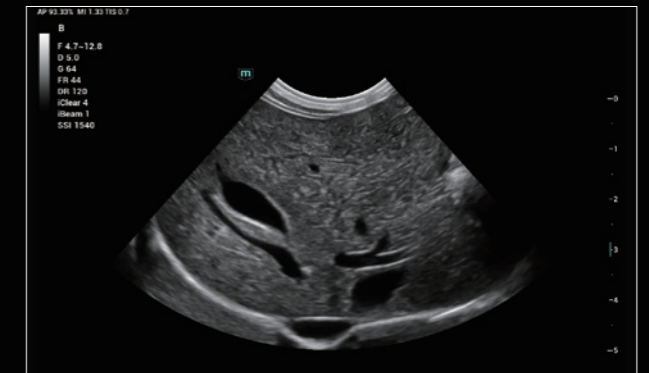
13.3" Touch Screen
Adjustable Position, Enabling Users to Navigate on Screen with Hands



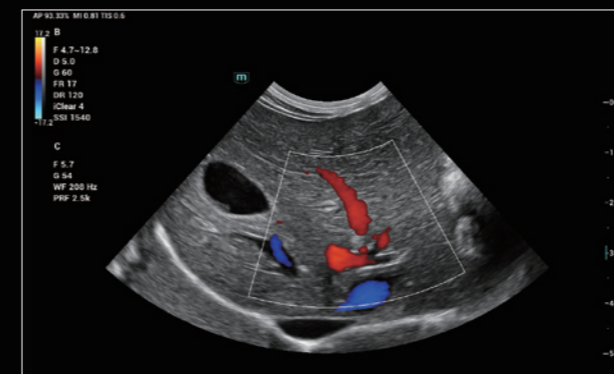
26dB Quiet Operation
Reducing Animal Stress Responses



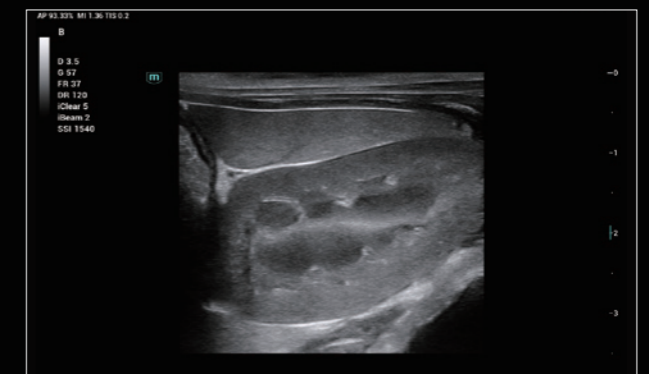
Canine Kidney



Feline Liver



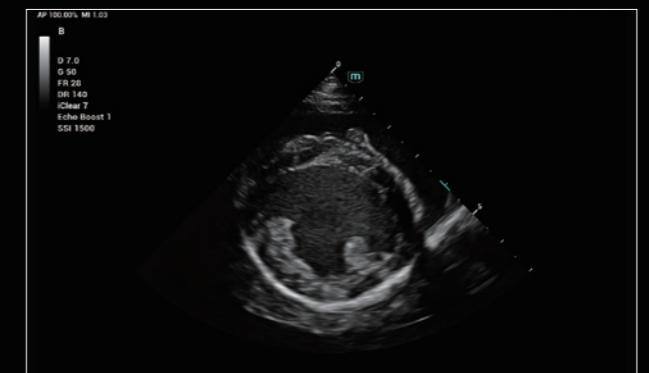
Feline Liver Vessel



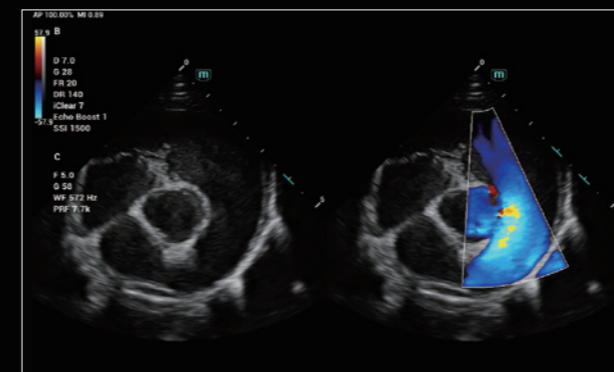
Canine Kidney



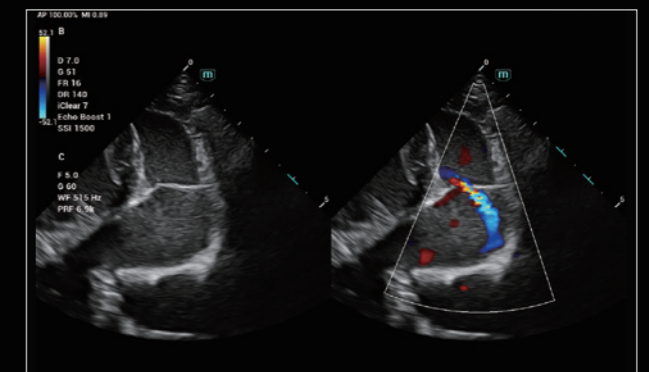
Feline Intestines



Canine Heart



Canine Pulmonary Artery



Canine Tricuspid Regurgitation